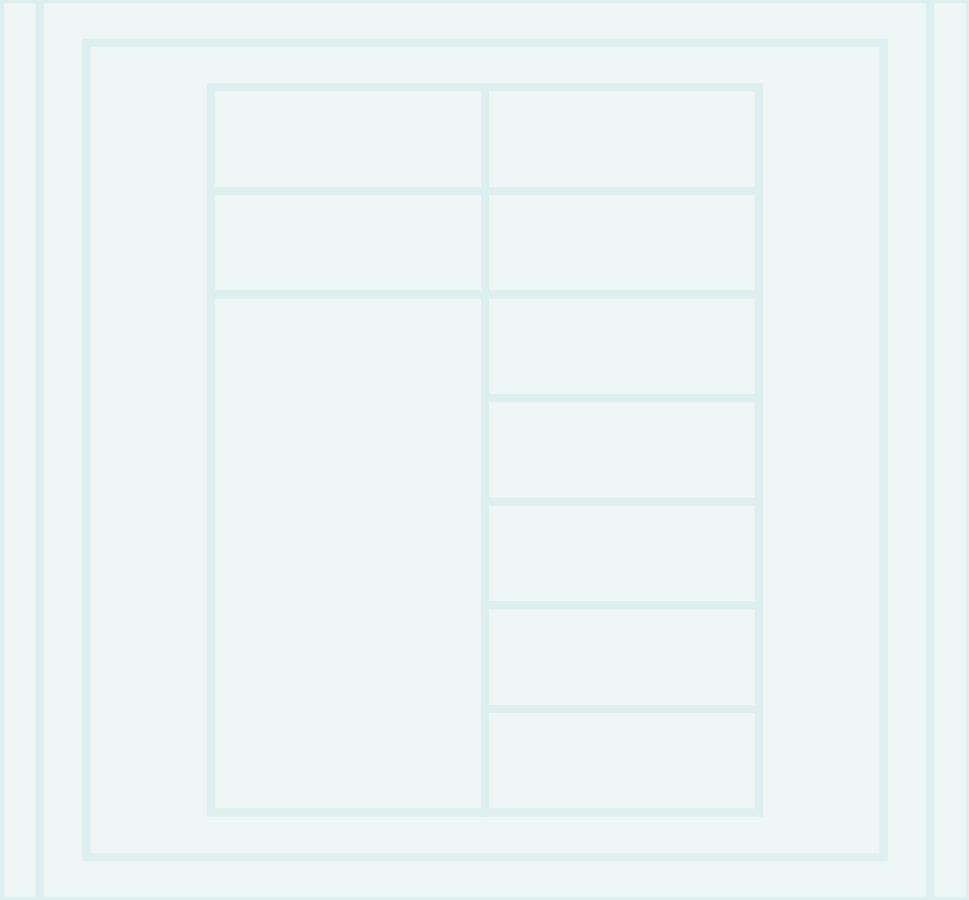


# LexCom Home

## Home Network Solution





# LexCom Home

Acting as a central consolidation hub behind the wall, LexCom Home Network Solution is the heart of home and hotel networking, transferring voice, data and TV signals to each data outlets, while enabling future upgrade or changes due to future application needs.



> TV



> Phone



> Computer



CATV 2-6 Splitter Module

Agilent

80HT006

CATV 8-24V 24-24V 24V Module

Agilent

80HAT004

Video 2-6 Patching Module

Agilent

80HVT006

Data 4-6 & Video 2-6 Patching Module

Agilent

80HVT006

Video 2-6 Patching Module (Chk)

Agilent

POWER

1 2 3 4 5

LINK/ACT

30/100/1000Mbps 2-Port Ethernet Switch Module

Agilent

80HVT006

POWER/STATUS LED

1 2 3 4 5

LINK/ACT

30/100/1000Mbps 2-Port Ethernet Switch Module

Agilent

80HVT006

POWER

2-3 Power Supply Module

Agilent

80HVT006

100 Pair 120 Module

Agilent

2-3 Power Patching Module (Chk)

Agilent

80HVT006

# An advanced wiring backbone for intelligent living in modern homes!

As home owners demand more usability and functionality from ever expanding home digital and communication technologies, there's a raising need for a well-designed structured wiring network.

To home owners, LexCom Home is a central hub consolidated multimedia application and easy living. To developers, it upgrades your development and helps your property stay ahead of competition.

- **A “future-proof” infrastructure**

LexCom Home provides you with easy and flexible intelligent house wiring system solution, enabling you to add equipment, cancel or modify functions with least efforts.

- **Centralized networking hub**

As the center of the entire house wiring system, LexCom Home is able to transfer signals such as TV, phone and network signals flexibly to anywhere you want, which forms the base and platform for establishing an intelligent home. The FTTH capable enclosure and modules allow high speed and multi-service fiber connectivity; it delivers fiber advantages efficiently in home network solution.

- **Style and contemporary design**

Schneider Electric is proud of providing customers with stylish and streamline products. It not only features with simplicity and functionality, but also renders decoration function by matching with interior design of all kinds of premises perfectly.

- **Easy cable management**

Home cable management is messy if there is not enough equipment and accessories to go along with networking. The unique design of LexCom Home enables cable terminations from the rear instead of the front reduces wire damage and keeps the front neat and tidy. It is simple to install, maintain or inspect.



# Home Network Solution Enables you to enjoy family life:

## Broadband access anywhere in-house

- Help you to set up a LAN at home, where multiple computers can access each other and share resources.
- You can surf wireless Internet at home through external wireless AP.
- You can use laptop to remote control the printer in reading room while sitting on the sofa in living room

## Access TV channel anywhere

- You are able to watch TV/paid TV anywhere at home with only one set-up box.
- You are able to enjoy movies in bedroom and kitchen
- People staying at different rooms can watch different medias.
- Able to identify your visitors and home status through TV monitor.
- Each data port is IPTV-enabled.

## Clean and tidy

- Disorderly and unsystematic cable wiring on the ceiling, under the carpet or at the edge of corner no longer exists.

## LexCom Home Box



Incoming Television, TV signal,  
and broadband / FTTH data

Voice Walplate  
Data Wallplate  
TV Wallplate







# An advanced wiring backbone for intelligent infrastructure in hotels!

LexCom Home provides stable, reliable and economic wiring system solution for hotels. It enables TV, voice and data network transmitting in a central hub supporting hotel network structure, maximizing property owner's efficiency with minimum costs.

- **Economic, fast and reliable network transferring**  
Adequate bandwidth guarantees future application, such as fiber access, IPTV wireless connection and multi-user Internet connection etc.
- **Easy to install and maintain**  
Each function module is easily to be exchanged, cables are easily plugged and pulled and installation can be completed without assistance of professionals.
- **Easy to upgrade**  
System upgrading is possible through module replacement or addition of modules, with big cabinet available for satisfying different demands. It allows easy network maintenance without access the guest room or disturb the guest.





# LexCom Home

---

## A “future-proof” infrastructure

LexCom Home is able to meet future needs and applications. The unique modular design incorporates changes and upgrades at a per module or a per port level. The modular design enables all components to be plugged in anytime, and components to be linked together forming a streamlined system.

## Quicksnap module design

The inside cover is fixed with an accordion hinge that allows it to open like an oven door, enabling easy access of individual modules for cabling. Modules are easy to snap out in one quick step, allowing contact with cables terminating at the rear. Quicksnap module design can facilitate users by improving re-wiring efficiency, minimizing duration of maintenance and avoiding unnecessary renovation costs incurred.

## Easy cable management

The UTP & coaxial cabling in star topology design is easy for future expansion. Without handy equipment and accessories, cable management could easily become a mess. With experience on commercial buildings, Schneider Electric brings the technology to residential. The small built-in cable management is modeled on cable management in commercial buildings. Cable terminates from the rear has significant advantages:

- Cable bending is reduced, which avoids cable damage as minimal bend radius requirements are met. When the cables terminate in the front, connection may loosen when cover is in place. Termination at the rear avoids these problems.
- It keeps the front of cabinet clean and tidy.

## Superb design in appearance and usability

Schneider Electric is proud of providing customers with stylish and streamline products. It not only features with simplicity and functionality, but also renders decoration function by matching with interior design of all kinds of premises perfectly.

## Easy installation and maintenance

Prior to the launch of the LexCom Home, planning, implementing and maintenance of a residential wiring system was in a messy. With the help of the wiring box, installation and maintenance become simple. The unique design of intelligent wiring box makes installation and maintenance easy to carry out and no experienced or specially trained staff is required.



# Content

---

## **LexCom Home D4**

Home Network Distribution Box Package	p2
Data Module	p4
Voice Module	p7
TV Module	p9
Power Supply Module	p10
Management Module	p11
OTHERS	p12

## **LexCom Home D5**

Home Network Distribution Box Package	p14
Data Module	p15
Voice Module	p19
TV Module	p23
Power Supply Module	p27
OTHERS	p29



# Home Network Distribution Basic Package

This product highlights simplicity and convenient installation. Besides standard home wiring configuration, users can add such multi-functional modules as telephone, data, TV to their liking and experience easy modern lives. Complying with the TIA/EIA 570A home wiring standards, the Delta series Home Network Distribution Box is stable, safe and reliable.

### STANDARD CONFIGURATION

- 6U standard Home Network Distribution Box
- D4V001 1-IN-3-OUT RJ11 Voice Module
- D4D001 1-IN-2-OUT Data Module (UTP)
- D4T002 1-IN-3-OUT TV Module
- Front cover D4D5FC6C has to be ordeed separately

### TECHNICAL SPECIFICATIONS

Material for the base box	1.0mm galvanized cold-rolled steel sheet
Material for the mounting frame	0.8mm high quality cold-rolled steel sheet
Surface finishing	Environmental friendly plastic spraying
Thickness of the mount material	0.8mm cold-rolled steel sheet
Surface finishing	Environmental friendly plastic spraying
Operating temperature	-20 - 80°C
Operating humidity	10 - 95%RH



D4U001

CATALOGUE NUMBER	DESCRIPTION	SIZE
D4U001	Basic Package 6U Basic Metal Base	300mm x 230mm x 90mm

# Home Network Distribution Box Package

## PRODUCT DESCRIPTION

- Simplicity design with convenient installation
- Modular design, user can change any modules according to their need
- Screws mounted design for modular, easy to maintenance
- Convenient network distribution management
- User-friendly design for easy installation
- Ergo-aesthetic design for distribution box cover
- Complying with the TIA/EIA 570A home wiring standard



D4B001



D4D5FC6U

CATALOGUE NUMBER	DESCRIPTION	SIZE
D4B001	6U Basic Metal Base + Frame Without Front Cover	300mm x 230mm x 90mm
D4B002	6U Upgrade Metal Base + Frame Without Front Cover	300mm x 230mm x 120mm
D4B003	8U Basic Metal Base + Frame Without Front Cover	410mm x 230mm x 90mm
D4B004	8U Upgrade Metal Base + Frame Without Front Cover	410mm x 230mm x 120mm
D4D5FC6U	Front Cover 6U – White	
D4D5FC8U	Front Cover 8U – White	



# Data Patching Module

IN1 & IN2 are two data input ports for D4D004 data module. Each of input port connects with two output ports respectively. OUT1 – OUT2 are built-in output ports for this data distribution. Each port can provide up to 100M bps of transmission speed. User may connect the network cable from the room required to OUT ports on the module, so to achieve a point-to-point data connection.



D4D004

### PRODUCT CHARACTERISTICS

The star layout makes maintenance simple and clear.

### TECHNICAL SPECIFICATIONS

Data IN port	2 ports
Data OUT port	4 ports
Connector type	RJ45
Insertion life	>750 times
Working temperature	-20 - 50°C
Working humidity	10 – 95% RH
Telecom category	Cat. 5

### CONNECTION METHOD

Connect the LAN port from ASDL modem to IN port on D4D004 module through residential network. Then, connect OUT ports to each room required network access, so to get point-to-point data connection. If FTTP+LAN is using, network cables can be connected to IN port directly.

### NOTES

This module is not providing router or switching function for data network. It only allows one output port accessing to internet at one time. Please do not plug in the network cable to OUT port from any other rooms not being used for internet access.

CATALOGUE NUMBER	DESCRIPTION	SIZE
D4D001	1 In 2 Out Data Module (UTPcat5)	120mm x 46mm x 20mm
D4D002	1 In 3 Out Data Module (UTPcat5)	120mm x 46mm x 20mm
D4D003	1 In 4 Out Data Module (UTPcat5)	120mm x 46mm x 20mm
D4D004	2 In 4 Out Data Module (UTPcat5)	120mm x 46mm x 20mm

# Data Switch Module

The D4D005 module adopts advanced micro-processor as the control core featuring high level of integration, good reliability, low power, saving power consumption, small dimensions, light weight, easy operation, plug and play, and simple maintenance. It is designed exclusively for small office and household users to organize small-scale LAN for achieving the sharing of intra LAN resources and information. Simply connect the LAN user access line to an optional port of the module, and it is possible to build up a small network with different locations in the room & sharing the information within LAN network.



**D4D005**

## PRODUCT CHARACTERISTICS

**Broadband access to the Internet:** Connect the broadband access line to one of 1X-5X port so as to have four computers (connected to this module) access to the Internet at the same time, and it is possible to stack up several switch modules for expansion to more ports for sharing access to the Internet.

**Modem access to the Internet:** Connect the LAN port of the router to one of 1X-5X port of the switch and make sure that the router is being setup correctly. Then, it is possible to connect several computers through this module for access to the Internet at the same time.

**LAN:** Through this module, it is also possible to organize the small LAN network so that a small group of computers can access to each other for sharing information resources.

## TECHNICAL SPECIFICATIONS

Number of ports	<b>5 x 10/100M self-adapted dual-speed switch ports</b>
Network standard	<b>IEEE802.3 10BASE-T Ethernet, IEEE802.3U 100BASE-TX Fast Ethernet Protocol</b>
Transmission Method	<b>Store and Forward</b>
Transmission bandwidth	<b>100BASE-TX: full duplex 200Mbps; half duplex 100Mbps 10BASE-T: full duplex 20 Mbps; half duplex 10Mbps</b>
Forward speed	<b>10BASE-T: 14880bps per port; 100BASE-TX: 148800bps per port</b>
Environmental temperature	<b>working at 0°C - 40°C</b>
Working humidity	<b>working at 10% - 90%</b>

## PRODUCT FEATURES

- Compatible to IEEE802.3, IEEE802.3u Ethernet Protocol standards 10/100Mbps full duplex, half duplex self-adapted capability
- Provision of non-blocking wire-speed forwarding capabilities without any store-forward blocking
- Dynamic allocation, high-efficiency buffer, balanced network loading and prevention of the loss of data packets
- Dynamic LED indicator light to indicate the working status and eliminate defects
- Independent external DC power supply to ensure stable equipment operation

## SYSTEM REQUIREMENTS

- LAN access via Ethernet connection with network card and cable
- TCP/IP network connection on each PC (Windows95/98/ME/NT/2000/XP)

CATALOGUE NUMBER	DESCRIPTION	SIZE
<b>D4D005</b>	10/100Mbps 5ports switch module, without power	120mm x 46mm x 32mm

# Data Router Module

D4D006 10/100Mbps 5 Ports Router Module, without Power takes into consideration of the requirements of the small and medium enterprises and household users, we have designed a simple, effective and cost-saving router with English/Chinese webpage setup interface, exclusively for the foregoing clients. It also incorporates login management function to provide real-time data traffic management and establish LAN-to-WAN or LAN-to-LAN connections. It is easy to install and practical to use. As far as LAN to WAN is concerned, it requires only a fixed IP address or PPPOE to dial up the account to let various users share the various resources on the Internet at the same time. You need only an ADSL Modem or Cable Modem to let various LAN users make use of the same broadband access to the Internet at the same time. It enables you to enjoy the maximum cost-effective benefits from the resources on the Internet at the lowest cost. As far as LAN to LAN is concerned, it provides routing at IP level to support the static routing and dynamic routing protocol. You can persistently connect LAN of two different network segments at ease.



**D4D006**

## TECHNICAL SPECIFICATIONS

Insertion life	<b>&gt;750 times</b>
Operating speed	<b>10Mbps/100Mbps</b>
Operating voltage	<b>5 -6V DC</b>
Operating current	<b>1000mA</b>
Working temperature	<b>10 - 40°C</b>
Working humidity	<b>&lt;80% RH</b>
Telecom category	<b>Cat. 5 or above</b>

## SYSTEM REQUIREMENTS

- With the broadband terminal equipment for RJ45 port
- DSL Modem or Cable Modem
- PC installed with 10/100M Ethernet card
- TCP/IP network software (Windows 95/98/ME/NT/2000/XP)
- Internet Explorer 5.0 or newer versions

## INSTALLATION ENVIRONMENT

- Home smart wiring box
- Far from other heating equipment
- Far from dirty or wet places

CATALOGUE NUMBER	DESCRIPTION	SIZE
<b>D4D006</b>	10/100Mbps 5ports router module, without power	120mm x 46mm x 47mm

# Voice Module

In the D4V005 module, IN1 & IN2 are two input ports for two external incoming telephone lines. Each of the incoming line can be distributed into four output extensions OUT 1 to OUT 4 respectively from the two external lines.

Simply plug in the two external telephone lines into IN1 and IN2, totally six extensions can be distributed by D4V005 module at different locations. In such a way, two respective incoming lines can set up with eight telephone extensions within the private office or family network.



D4V005

### PRODUCT CHARACTERISTICS

IN1 & IN2 are two input ports for two external incoming telephone lines. Each of the incoming line can be distributed into four output extensions OUT 1 to OUT4 respectively from the two external lines. In such a way, two respective incoming lines can set up with eight telephone extensions within the private office or family network.

### TECHNICAL SPECIFICATIONS

Voice input port	2 ports
Voice output port	8 ports
Connector type	RJ11
Connection type	Multiple connection
Insertion life	>750 times
Working temperature	0 - 50°C
Working humidity	10 – 95% RH

CATALOGUE NUMBER	DESCRIPTION	SIZE
D4V001	1 In 3 Out RJ11 Voice Module	120mm x 46mm x 20mm
D4V002	1 In 4 Out RJ11 Voice Module	120mm x 46mm x 20mm
D4V003	1 In 6 Out RJ11 Voice Module	120mm x 46mm x 20mm
D4V004	2 In 6 Out RJ11 Voice Module	120mm x 46mm x 20mm
D4V005	2 In 8 Out RJ11 Voice Module	120mm x 46mm x 20mm

# Voice Module (SW)

In the D4V007 module, IN1 & IN2 are two input ports for two external incoming telephone lines. OUT1 to OUT8 are the eight extensions for the telephone line. The red on/off buttons control the access of IN1 and IN2 lines to the eight extensions. Press down the corresponding on/off buttons to connect the extension with IN1, or release the on/off button to connect the extension with IN2.

Each extension can select the connection either from line IN1 or from line IN2 by press down or release the on/off button. If you want to use line IN1 for the private line of your home/office, & with line IN2 used jointly by the family, you can simply achieve this function by pressing any on/off button on the module. Without laying any complicated lines, it is also possible to switch the on/off button function at any time in line according to your requirements. In this way, without disturbing other family members, you can assign a private line ringing at your designated location.



D4V007

### TECHNICAL SPECIFICATIONS

Voice input port	<b>2 ports</b>
Voice output port	<b>8 ports</b>
Connector type	<b>RJ11</b>
Connection type	<b>Multiple connection</b>
Insertion life	<b>&gt;750 times</b>
Working temperature	<b>0 - 50°C</b>
Working humidity	<b>10 – 95% RH</b>

CATALOGUE NUMBER	DESCRIPTION	SIZE
D4V006	2 In 6 Out RJ11 Voice Module (SW)	120mm x 46mm x 20mm
D4V007	2 In 8 Out RJ11 Voice Module (SW)	120mm x 46mm x 20mm



# TV Module

In the D4T002 module, connect the Cable TV signal cable for the user access to the IN port. The signals are evenly distributed through the module to the ports OUT1-OUT3 for connection to the TV interface at various locations for providing TV signals. It is also possible to connect one of the OUT ports to the broadband modem. It is capable of splitting out the broadband signals to provide broadband access to the Internet.



**D4T002**

## TECHNICAL SPECIFICATIONS

TV input port	<b>1 port</b>
TV output port	<b>3 ports</b>
Connector type	<b>F Type</b>
Connection Method	<b>Evenly distributed signals</b>
Working frequency	<b>5~1000MHz bi-directional</b>
Distribution loss	<b>6dB</b>
Separation	<b>≤29dB</b>
Reflection loss	<b>≤18dB</b>
Working temperature	<b>-10 - 45°C</b>
Working humidity	<b>10 – 95% RH</b>

### Notes:

When the OUT port is not in use, please screw in the 75Ω terminator, so that the signal attenuation will not affect other TV signals.

CATALOGUE NUMBER	DESCRIPTION	SIZE
<b>D4T001</b>	1 In 2 Out CATV Module	120mm x 46mm x 20mm
<b>D4T002</b>	1 In 3 Out CATV Module	120mm x 46mm x 20mm
<b>D4T003</b>	1 In 4 Out CATV Module	120mm x 46mm x 20mm
<b>D4T004</b>	1 In 6 Out CATV Module	120mm x 46mm x 20mm
<b>D4T005</b>	2 In 6 Out CATV Module	120mm x 46mm x 20mm

# Power Supply Module

Specially designed for home users, the D4P001 Module is mainly used to supply power to active devices of LexCom Home range. It adopts advanced microprocessor as control core and is enabled with security functions such as anti-surge, anti-lightning, overload and over-current protection and self-recovery protection. Besides, it features stable output power, good reliability, low power consumption, compact size, plug-and-play and is easy to install and maintain.



D4P001

### PRODUCT CHARACTERISTICS

To supply power to D4D005 Switch module or D4D006 Router module.

### TECHNICAL SPECIFICATIONS

AC power input jack	1 pc
DC power output jack	1 pc
Port type	Standard DC port
Operating voltage	110-240V AC
Output voltage	5V DC
Output current	1000mA
Output power	5W
Working temperature	0 - 50°C
Working humidity	10 – 95% RH

### Notes:

The Module is directly powered by 220V power supply and shall be installed by professional only.

CATALOGUE NUMBER	DESCRIPTION	SIZE
D4P001	1-1 Power Supply Module	120mm x 46mm x 47mm
D4P002	1-3 Power Supply Module	120mm x 46mm x 47mm
D4P003	1 In 2 Out 220V1A Power Patch Module (CHINA)	120mm x 46mm x 47mm

# Management Module

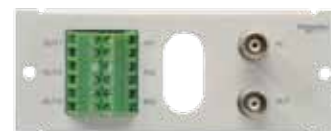
D4M001 module is applicable to remote meter reading system of water, electricity and gas for property management, building audio intercom system or security system. The module provides 3 pairs of links, each pair is able to be connected with a 2-core line, IN for input and OUT for output, and each line is completely independent of each other. The module can be connected with 6 lines in total, with 3 pairs of IN and OUT ports. Take remote meter reading of water, electricity and gas for example, service signal wire can be connected respectively to IN1-IN3 ports, then output to OUT1-OUT3 ports accordingly by module allocation and then the output signal is connected to the pulse signal generator of the three meters, in this way the remote meter reading system for property management is connected.

## TECHNICAL SPECIFICATIONS

Weak signal input port	<b>3 pcs</b>
Weak signal output port	<b>3 pcs</b>
Port type	<b>Terminal</b>
Working temperature	<b>-20 - 50°C</b>
Working humidity	<b>10 – 95% RH</b>



**D4M001**



**D4M004**

## PRODUCT FEATURES

The standard 3 pair of terminals comply with basic user needs and is convenient for connection or line extension.

CATALOGUE NUMBER	DESCRIPTION	SIZE
<b>D4M001</b>	3 In 3 Out Metering Module	120mm x 46mm x 20mm
<b>D4M002</b>	6 In 6 Out Metering Module	120mm x 46mm x 20mm
<b>D4M003</b>	9 In 9 Out Metering Module	120mm x 46mm x 20mm
<b>D4M004</b>	3 In 3 Out Metering Module + BNC Module	120mm x 46mm x 20mm
<b>D4M005</b>	6 In 6 Out Metering Module + BNC Module	120mm x 46mm x 20mm

# Others

D4N001 Module is applicable for the vacancy in LexCom Home range module mounting bracket, to act as a baffle.

Brand Logo on the module panel helps to hold up the module mounting bracket, making the inside of distribution box neat and tidy.



D4N001

CATALOGUE NUMBER	DESCRIPTION	SIZE
D4N001	1U Logo Blank Module	120mm x 46mm x 10mm





# Home Network Distribution Box Package

LexCom Home range Home Network Distribution Box is made of quality cold-rolled sheets and galvanized steel sheets and processed via advanced CNC machining center. Various domestic leading production technologies are adopted to ensure the environmental adaptability and compression resistance of the product. The user-friendly door of the home network distribution box, which is designed according to ergonomics, could be opened easily.

The various layered surface treatments make the product elegant and pleasant-looking. The cable management on the module's frame keeps the wires in perfect order. The reversible module bracket with latching system makes the management and maintenance safe, simple and clear. The beautiful and user-friendly wiring design on the back allows you to easily operate the box and gives you a smart home experience that you have never had before.



D5MBB14U

## TECHNICAL SPECIFICATIONS

The bottom is made of	<b>Galvanized cold-rolled sheet</b>
The frame is made of	<b>Quality cold sheet</b>
Surface treatment	<b>Environmental plastic spraying</b>
The door is made of	<b>Quality cold-rolled sheet</b>
Surface treatment	<b>Environmental plastic spraying</b>
The mount bracket is made of	<b>Quality cold-rolled sheet</b>
Surface treatment	<b>Environmental plastic spraying</b>
Door opening angle	<b>≥180°</b>
Working temperature	<b>-20 - 80°C</b>
Working humidity	<b>10 - 95%RH</b>

MODULE POSITIONS	CATALOGUE NUMBER	DESCRIPTION	DIMENSIONS OF THE COVER	DIMENSIONS OF BASE ENCLOSURE
<b>6U</b>	<b>D5MBBCM3026</b>	6U Base Enclosure with Mounting Frame	330mm x 255mm	300mm x 230mm x 90mm
	<b>D4D5FC6U</b>	Front Cover 6U – White		
<b>8U</b>	<b>D5MBBCD4040</b>	8U Base Enclosure with Mounting Frame	436mm x 255mm	410mm x 230mm x 120mm
	<b>D4D5FC8U</b>	Front Cover 8U – White		
<b>10U</b>	<b>D5MBB10U</b>	10U Base Enclosure	395mm x 295mm	386mm x 380mm x 120mm
	<b>D5MBBCM10U</b>	10U Metal Front Cover with Mounting Frame		
<b>7U</b>	<b>D5MBB14U</b>	14U Base Enclosure	394mm x 388mm	386mm x 380mm x 120mm
	<b>D5MBBCM7U</b>	7U Metal Front Cover with Mounting Frame		
<b>14U</b>	<b>D5MBB14U</b>	14U Base Enclosure	394mm x 388mm	386mm x 380mm x 120mm
	<b>D5MBBCM14U</b>	14U Metal Front Cover with Mounting Frame		
<b>TW</b>	<b>D5MBBCM14UTW</b>	14U Metal Front Cover w/Mount Frame (TW)	420mm x 420mm	N.A.
<b>NZ-Non FTTH</b>	<b>D5MBB14UNZ</b>	14U Base Enclosure (New Zealand)	394mm x 388mm	386mm x 380mm x 90mm
	<b>D5MBBCM14U</b>	14U Metal Front Cover with Mounting Frame		
<b>NZ- FTTH</b>	<b>D5MBBCM14UNZ</b>	14U Base End_Metal Fro Cov w/Mou Fr(NZ)	430mm x 790mm	400mm x 740mm x 100mm

# Data Patching Module

The service cable entrance and cable outlets of D5MD103 Data 1-3 Patching Module are RJ45 ports with international standards.

IN is the data input port that will be distributed through the module to 3 data ports OUT1-OUT3, each with speed up to 100Mbps. User may insert the Ethernet cable of the room that needs Internet connection into OUT port to realize point-to-point data link.

### TECHNICAL SPECIFICATIONS

Data IN port	<b>1 port</b>
Data OUT port	<b>3 ports</b>
Connector type	<b>RJ45</b>
Connection mode	<b>balanced signal distribution</b>
Wire gauge	<b>24AWG</b>
Insertion life	<b>≥750 times</b>
Working temperature	<b>0 – 45°C</b>
Working humidity	<b>10 – 95% RH</b>

**Notes:**

It is a physical connection module and cannot be used for multiple ports simultaneously. Only one OUT port can be inserted with Ethernet cable each time, please do not insert Ethernet cables of other rooms on the unused OUT ports, so as not to affect normal operation of the network.



D5MD103

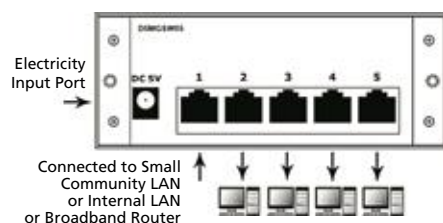
CATALOGUE NUMBER	DESCRIPTION	SIZE
D5MD103	Data 1-3 Patching Module	120mm x 46mm x 21mm

# Data Switch Module

The Module adopts advanced micro-processor as the control core featuring high level of integration, good reliability, low power consumption, high energy efficiency, small dimensions, light weight, easy operation, plug and play, and simple installation and maintenance. It is designed exclusively for household users to organize small-scale LAN for achieving the sharing of network resources and information. Simply connect the LAN user access line to any port of the module, and then it is possible to access each other in 4 different areas in an indoor place at the same time. It is also possible to share more information ports by using several data switch modules in a multi-layer mode through any port.

## PRODUCT DESCRIPTION

Number of ports	<b>5 × 10/100/1,000M self-adapted dual-speed switch ports</b>
Network standard	<b>IEEE 802.3, IEEE 802.3u, IEEE 802.3x, IEEE802.3ab</b>
Protocol	<b>CSMA/CD</b>
Topology	<b>Star shape</b>
Network Cable	<b>CAT5e or CAT6 shield(STP) / Unshield twisted pair(UTP)</b>
Transmission Method	<b>Store and Forward</b>
Transmission bandwidth	<b>1,000BASE-T: full duplex 2,000Mbps; half duplex 1,000Mbps</b>
100BASE-TX	<b>Full duplex 200Mbps; half duplex 100Mbps</b>
10BASE-T	<b>Full duplex 20Mbps; half duplex 10Mbps</b>
Forward speed	<b>10BASE-T: 14,880bps per port</b>
100BASE-TX	<b>148,800bps per port</b>
1,000BASE-T	<b>1,488,000bps per port;</b>
Working temperature	<b>0°C - 40°C</b>
Working humidity	<b>10% - 90%</b>



D5MSW05



D5MSW08



D5MGW05

CATALOGUE NUMBER	DESCRIPTION	SIZE
<b>D5MSW05</b>	10/100Mbps 5 Ports Ethernet Switch Module	120mm x 46mm x 47mm
<b>D5MSW08</b>	10/100Mbps 8 Ports Ethernet Switch Module	120mm x 46mm x 47mm
<b>D5MGW05</b>	10/100/1000Mbps 5 Ports Ethernet Switch Module	120mm x 46mm x 47mm

# Data Router Module

The Module is a simple, effective and cost-effective IP router specially designed to meet the needs of hotel guest rooms and household users. It features Chinese web page setting interface and strong login management. The monitoring software provides real-time information about the login status and data flow of LAN users so that you can quickly create LAN-WAN and LAN-LAN connections. It is practical and easy to install.

A LAN-WAN connection can be created via a static IP address or a PPPoE dial-up number to enable many people to share the Internet resources at the same time. Just one ADSL Modem or Cable Modem enables many LAN users to access the Internet via one cable at the same time, which can maximize the benefits of Internet resources at minimum costs.

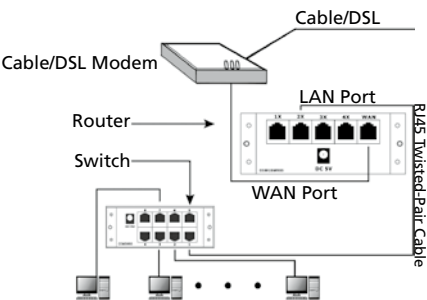
For LAN-LAN connections, the module provides an IP router and supports Static Routing and Dynamic Routing Protocol so that you can conveniently connect two LANs in different network segments.



D5MGSWR05

### TECHNICAL SPECIFICATIONS

Standard:	IEEE802.3, IEEE802.3u, PPPoE
Protocol	CSMA/CD, TCP/IP, RIP1, RIP2, PPTP(VPN), PPPoE, SNMP Trap
Ports	4x10M/100M/1,000M(LAN) RJ45 ports, 1x10M/100M(WAN) RJ45 port
Cable type	CAT5e or CAT6 Twisted Pair UTP/STP CAT5e
Layout	Star shape
WAN speed	Maximum 100M
LED indicator	It can indicate power, test, port connection and activation status.
LAN speed	10Mbps/100Mbps/1,000Mbps self-adapted



### FUNCTIONAL CHARACTERISTICS

- Providing PPPoE and private line service
- Capable of automatic connection and disconnection in ADSL (PPPoE) mode
- Having strong firewall
- Supporting static and dynamic routing: RIP1, RIP2, RIP1-Compatible
- Providing DHCP server
- Automatically distributing IP addresses to LAN workstation
- Filtering LAN access datapackets via ports, IP address, MAC address, etc.
- Providing flow monitoring, viewing websites visited by users, and specifying access authority
- Providing Chinese web page setting interface and simple installation

CATALOGUE NUMBER	DESCRIPTION	SIZE
D5MSWR05	10/100Mbps 5 Ports Ethernet Switch Router Module	120mm x 46mm x 47mm
D5MGSWR05	10/100/1000Mbps 5 Ports Ethernet Switch Router Module	120mm x 46mm x 47mm

# Data and Voice Module

D5MV44D15 Data 4-4 & Voice 1-5 Patching Module is an FTTH special module. Connect the data input port of the 4 in 4 out data interface to the 4 data output ports of ONU (Optical Network Unit), and connect the 4 data output ports of 4 in 4 out data interface to data service terminal respectively. For example, connect IPTV to IPTV set top box, with other data ports respectively connected to data panel terminals in different rooms for accessing the Internet. Connect LINE port of 1 in 5 out voice interface to one of the VOIP voice ports of ONU (Optical Network Unit), and connect the 5 output ports of 1 in 5 out voice interface to voice panel terminals in different rooms for voice call. This module itself features small dimensions, light weight, zero power consumption, good reliability, plug and play, easy maintenance and easy operation. It provides a work interface for developers, system integrators and owners and has two strengths: distinct interface at installation and easy maintenance.



D5MV44D15

## TECHNICAL SPECIFICATIONS

Data in port	<b>4 ports</b>
Data out port	<b>4 ports</b>
Connector type	<b>RJ45</b>
Connection type	<b>Butt joint</b>
Telecom Category	<b>Cat. 5</b>
Voice input port	<b>1pc</b>
Voice output port	<b>5pcs</b>
Connector type	<b>RJ11</b>
Connection type	<b>Multiple connection</b>
Suitable for	<b>24AWG cable installation</b>
Reed insertion life	<b>&gt;750 times</b>
Working temperature	<b>0 - 50°C</b>
Working humidity	<b>10 - 95%RH</b>

CATALOGUE NUMBER	DESCRIPTION	SIZE
D5MV44D15	Data 4-4 & Voice 1-5 Patching Module	120mm x 46mm x 23mm

# Voice Module

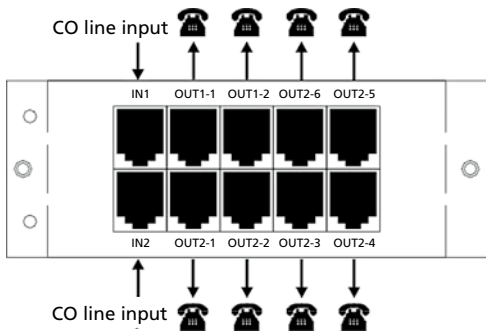
PRODUCT DESCRIPTION

IN1-4: LINE1 - LINE4, four phone signal input ports (CO line port)

OUT1-1 - OUT1-9	LINE1 phone signal output port (extension port)
OUT2-1 - OUT2-3	LINE2 phone signal output port (extension port)
OUT3-1 - OUT3-2	LINE3 phone signal output port (extension port)
OUT4-1 - OUT4-2	LINE4 phone signal output port (extension port)

TECHNICAL SPECIFICATIONS

Voice input port	1pc
Voice output port	16pcs
Port type	RJ45
Connection mode	balanced signal distribution
Wire gauge	24AWG
Plug-pull frequency	≥750 times
Working temperature	-10 - 50°C
Working humidity	10 – 95% RH



D5MV208



D5MV416



CATALOGUE NUMBER	DESCRIPTION	SIZE
D5MV208	Voice 2-8 Patching Module	120mm x 46mm x 47mm
D5MV416	Voice 4-16 Patching Module	120mm x 92mm x 47mm

# Voice Module (SW)

Each extension can select the connection either of line IN1 or line IN2 by using the switch. If you want to use line IN1 as the special line for your home or private purpose, and with line IN2 jointly used by the family, you can use this function simply by using the switch on the module without laying any complicated lines. It is also possible to change the switch function at any time according to your requirements of special line location. In this way, you can assign several telephones of a private line ringing at your designated location, so when someone calls your private phone number, disturbance to your family members and others taking your phone call could be avoided. This module itself features small dimensions, light weight, zero power consumption, good reliability, plug and play, easy maintenance and easy operation. It provides a work interface for developers, system integrators and owners and has two strengths: distinct interface at installation and easy maintenance.



D5MVS208

### TECHNICAL SPECIFICATIONS

Voice input port	2 pcs
Voice output port	8 pcs
Connector type	RJ45
Connection type	Multiple connection (controlled by the switch)
Suitable for	24AWG cable installation
Reed insertion life	>750 times
Working temperature	0 - 50°C
Working humidity	10 – 95% RH

CATALOGUE NUMBER	DESCRIPTION	SIZE
D5MVS208	Voice 2-8 Patching Module (SW)	120mm x 46mm x 23mm

# Voice PBX Module

### PRODUCT DESCRIPTION

ONLY PBX AC20/40V	power input jack (USB)
POWER	power indicator
RESET	reset button
IN1-2	C0 line1 and C0 line2 input ports (RJ45)
AUTO DOOR	doorbell and doorphone port (RJ45)
EXT1 - EXT8	Extension1 - Extension8 output ports (RJ45)
EXP1/EXP2	Expansion ports (RJ45)

### PRODUCT ACCESSORIES

#### D5MPBX208

0.5m USB cable	1pc
Mounting screw M3-5	4pcs
User manual	1pc
Certificate of quality	1pc

#### D5MPBX08E

0.3m expansion cable	2pcs
Mounting screw M3-5	2pcs
User manual	1pc
Certificate of quality	1pc

### OPTION

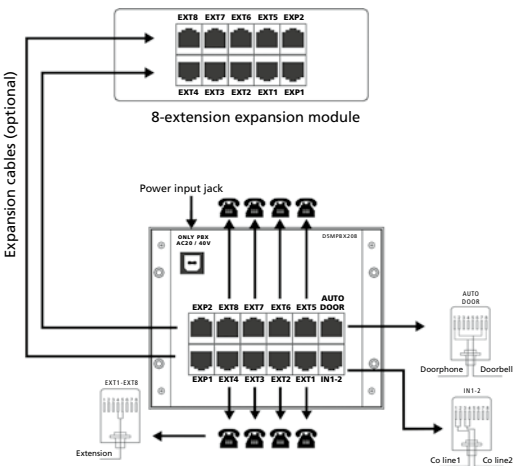
Doorphone
Doorbell switch



D5MPBX208



D5MPBX08E



### PRODUCT FEATURES

- Direct outward dialing
- Dial out for an extension: executive/secretary function
- Executive override: priority of use
- Toll restriction: call cost control
- Ring setting: flexible ring types
- Inquiry for transfer: high availability
- Call pickup: improving work efficiency
- Three-party conference: conference call
- Doorbell: valuable function

CATALOGUE NUMBER	DESCRIPTION	SIZE
D5MPBX208	PBX 2-8 Main System Module	120mm x 92mm x 47mm
D5MPBX08E	PBX 8-Way Extension Module	120mm x 46mm x 47mm



# Voice 110 Module

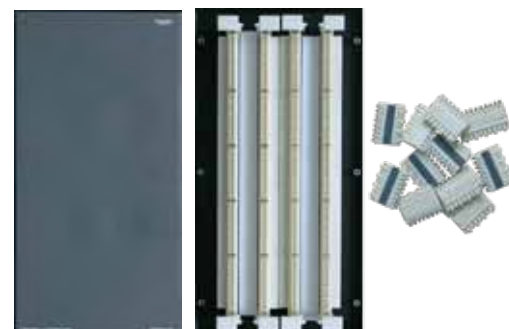
D5MV110 100 Pair 110 Module is designed and developed according to performance requirements on connecting hardware stipulated in TIA/EIA-568A Cat.5. A 3-point link patch panel is adopted. The patch panel kit includes 20 4-terminal-pair and 4 5-terminal-pair and cables are connected by clamping. The patch panel is capable of housing 22-26AWG cable and is suitable for voice cabling and Cat.5 high speed data transmission. Patching is possible by standard patch cords between cable pairs. Made of flame-retardant PVC up to UL94V-0 flame retardant standards, the patch panel features good reliability, compact size, light weight and is easy to install and maintain. It is a dedicated module for small offices and supplements the professional LexCom Home range products.

## TECHNICAL SPECIFICATIONS

Connection pairs	<b>100 pairs</b>
Port type	<b>clamping</b>
Connection	<b>multiplex</b>
Wire gauge	<b>22 - 26AWG</b>
Clamping times	<b>≥200 times</b>
Operating temperature	<b>-10 - 50°C</b>
Operating humidity	<b>10 – 95% RH</b>

## PRODUCT ACCESSORIES

110 Module 4P	<b>20pcs</b>
110 Module 5P	<b>4pcs</b>
Identification slot	<b>2pcs</b>
Mounting screw M3-5	<b>6pcs</b>
User manual	<b>1pc</b>
Certificate of quality	<b>1pc</b>



D5MV110

CATALOGUE NUMBER	DESCRIPTION	SIZE
D5MV110	100 Pair 110 Module	120mm x 233mm x 45mm

# TV Module

The Module is designed and developed according to the technical requirements and specifications in the technical standards on Radio Frequency (RF) signal passive distributor issued by SARFT. It features high integration, good reliability and low power consumption. The zinc alloy housing with tin cerium alloy plating boasts excellent conductive property and corrosion resistance, as well as compact size and light weight. Moreover, the design of back cover closely fit with housing enables easy installation and maintenance.

Connect the CATV service signal cable to IN port to evenly distribute the signal to one of the OUT ports, which are connected to TV ports to supply TV signals at different locations. Otherwise, one of the OUT ports can be connected to the broadband modem in order to separate the broadband signal for broadband Internet access.

## TECHNICAL SPECIFICATIONS

TV input port	<b>1 pc</b>
TV output port	<b>6pcs</b>
Port type	<b>F type</b>
Connection mode	<b>balanced signal distribution</b>
Operating frequency	<b>5 - 1000MHz, bidirectional</b>
Distribution loss	<b>10dB</b>
Isolation	<b>≥29dB</b>
Return Loss	<b>≥18dB</b>
Working temperature	<b>-10 - 45°C</b>
Working humidity	<b>10 – 95% RH</b>
Wire gauge	<b>75Ω double shielded coaxial cable</b>

### Notes:

Please do not screw in 75Ω BNC adapter on unused OUT ports, so as to avoid significant signal loss that may affect other TV signals.



**D5MT104**



**D5MT106**

CATALOGUE NUMBER	DESCRIPTION	SIZE
<b>D5MT103</b>	CATV 1-3 Splitter Module	120mm x 46mm x 21mm
<b>D5MT104</b>	CATV 1-4 Splitter Module	120mm x 46mm x 21mm
<b>D5MT106</b>	CATV 1-6 Splitter Module	120mm x 46mm x 21mm

# TV Module

CATV 1-2 Tab Module is designed and developed according to the technical requirements and specifications in the technical standards on Radio Frequency (RF) signal passive distributor issued by SARFT. It features high integration, good reliability and low power consumption. The zinc alloy housing with tin cerium alloy plating boasts excellent conductive property and corrosion resistance, as well as compact size and light weight. Moreover, the design of back cover closely fit with housing enables easy installation and maintenance. A splitter outputs signal to each port with the same strength, so it is useful when a family has several TVs. There are 2-way splitters, 3-way splitters, 4-way splitters and so on. While the output of a tap is imbalanced: the signal of mainline is stronger than that of branches. It is used when there are several households sharing the same signal, with multiple taps to distribute the signal along the line.

When there are several households or villa users sharing the same signal, connect the service CATV signal cable to IN ports, connect cables from ports OUT, TAP1 and TAP2 to TV splitter modules of each floor, where the signal will be evenly distributed to each terminal port through the TV splitter modules and then connected to TV ports to supply TV signals. Otherwise, the OUT port can also be connected to the broadband modem to separate broadband signal for broadband Internet access.

- IN: signal input port
- TAP1-TAP2: branch signal output port
- OUT: mainline signal output port



**D5MT102**

## TECHNICAL SPECIFICATIONS

Item				2-Way Tap
Tap Loss (dB)	Typical Value (Allowable deviation)	5MHz	± 0.5	11.5
		10MHz	± 0.5	11.5
		50MHz	± 0.5	11.5
		750MHz	± 0.9	11.9
		1000MHz	± 0.9	12.4
Insertion Loss (dB)	5MHz			≥ 1.5
	10MHz			≥ 1.6
	50MHz			≥ 1.6
	750MHz			≥ 1.6
	1000MHz			≥ 1.9
Reverse Isolation (dB)	5-10MHz			≥ 28
	10-1000MHz			≥ 28
Isolation (dB)	5-10MHz			≥ 28
	10-1000MHz			≥ 28
Return Loss (dB)	5-10MHz			≥ 16
	10-1000MHz			≥ 18

### Notes:

Please screw in 75Ω BNC adapter on unused OUT ports, so as to avoid significant signal loss that may affect other TV signals.

CATALOGUE NUMBER	DESCRIPTION	SIZE
<b>D5MT102</b>	CATV 1-2 Tab Module	120mm x 46mm x 21mm

# TV Module

The design of back cover closely fit with housing enables 130dB anti RF interference, and easy installation and maintenance. Connect the CATV service signal cable to IN port where the signals are evenly distributed through the Module to OUT1–OUT6 ports, which are then connected to TV ports to supply TV signals at 6 different locations. If there is also Cable Modem broadband signal in the CATV service signals, one of the OUT ports can be connected to broadband modem to separate the broadband signals for broadband Internet access.

- TV input port: 1pc
- TV output port: 6pcs
- Port type: F type
- Connection mode: balanced signal distribution



D5MT106A

### TECHNICAL SPECIFICATIONS

Operating frequency	5 - 862MHz
Distribution loss	10dB
Gain	10dB
Return loss	13dB
Noise figure	≤ 8dB
Input voltage	5 V/DC 150mA
Operating temperature	-10 – 45°C
Operating humidity	10 – 95% RH
Wire gauge	75Ω double shielded coaxial cable

**Notes:**

59 PAL analog channels are arranged below 550MHz and are available at the channel peak.

CATALOGUE NUMBER	DESCRIPTION	SIZE
D5MT106A	CATV 1-6 Splitter with Amplifier Module	120mm x 46mm x 21mm

# TV Module

The Module is designed and developed according to the technical requirements and specifications in the technical standards of radio frequency signal passive distribution products featuring high level of integration, good reliability, low power consumption, high energy efficiency, small dimensions, light weight, the back cover closely connected to the shell, simple installation and maintenance. With zinc alloy shell plated with tin-cerium alloy, it provides good conductivity and corrosion resistance.

Connect the access cable TV signal wire to CATV IN port, and satellite TV signal wire to SATV IN port so as to distribute the signals to OUT1-OUT4 ports equally through the module to send them to wall interfaces at 4 different locations for providing satellite TV or cable TV signals.



D5MSAT204

## TECHNICAL SPECIFICATIONS

TV input port	<b>2pcs</b>
TV output port	<b>4pcs</b>
Connector type:	<b>F</b>
Connection type	<b>signals distributed equally</b>
Working frequency	<b>low pass 45-750MHz, high pass 950-2,300MHz</b>
Assigning loss	<b>8dB</b>
Isolation	<b>≥29dB</b>
Reflection loss	<b>≥18dB</b>
Working temperature	<b>-10 - 45°C</b>
Working humidity	<b>10 – 95% RH</b>
Suited wire gauge	<b>75Ωdouble shielded coaxial line</b>

CATALOGUE NUMBER	DESCRIPTION	SIZE
D5MSAT204	CATV & SATV 2-4 EF TV Module	120mm x 46mm x 33mm

# Power Supply Module

Specially designed for home users, the Power Supply Module is mainly used to supply power to active devices. Adopting advanced microprocessor as control core, the Module is enabled with security functions such as anti-surge, anti-lightning, overload and over-current protection and self-recovery protection, besides, it features stable output power, good reliability, low power consumption, compact size, plug-and-play and is easy to install and maintain. Capable of supplying power to switches, broadband routers, enhanced TV distribution modules (TV) or enhanced audio/TV distribution modules (AV), the Module is the center of and a complete power solution for intelligent residential distribution boxes.

- ON-OFF: power switch
- POWER: power indicator
- DC 5V: DC power output jack
- AC 110-240V: 110-240V power input jack

## TECHNICAL SPECIFICATIONS

Input	AC 110V - 220V $\pm$ 10%
Output	DC 5V1A (power supply to SWITCH, ROUTER, TV, AV)
Power	5W
Ripple	< 70mV
Switching frequency	50kHz
Operating frequency	50Hz
Boot inrush current	$\leq$ 10A
Anti-surge voltage	470V/S
Boot time	$\leq$ 0.5sec
Input-output withstand voltage	1500V/AC 1min
Voltage stability	$\leq$ 1%
Efficiency	> 80%
Short-circuit	self-recovery
Overheating protection	available
Ambient temperature	-10 - 45°C



D5MP101



D5MP103



D5MP105



CATALOGUE NUMBER	DESCRIPTION	SIZE
D5MP101	1-1 Power Supply Module	120mm x 46mm x 47mm
D5MP103	1-3 Power Supply Module	120mm x 46mm x 47mm
D5MP105	1-5 Power Supply Module	120mm x 92mm x 47mm

# Power Module

D5MP102CN 1-2 Power Patching Module (China) is mainly designed for the power supply of active equipment inside the distribution box. It is equipped with 2 220V Chinese standard sockets for user's convenience. It is designed and developed according to technical requirements and specifications under the building power technical standard, featuring good conductivity and corrosion resistance, small dimensions, light weight, close coordination between the back cover and shell, simple installation and maintenance.

TECHNICAL SPECIFICATIONS

Environmental humidity	-10 - 45°C
------------------------	------------



D5MP102CN

CATALOGUE NUMBER	DESCRIPTION	SIZE
D5MP102CN	1-2 Power Patching Module (China)	120mm x 46mm x 47mm

# Others

Adopting advanced microprocessor as control core, the D5MFOMC Fiber Media Converter Module features high level of integration, good reliability, low power consumption, compact size, light weight, easy-to-use, plug-and-play and simple installation and maintenance. Data is transmitted between optical and electric networking media through two types of network transmission technology, i.e., data link layer 2 store-and-forward switch mode or physical layer 1 cut-through mode. It supports dual multimode optical cable 1310nm (62.5/125μm, 500 MHz\*km) and is able to realize mutual conversion between 10/100BaseT(X) twisted pair electrical signal and 100BaseFX optical signal. Besides, the network transmission distance is extended from 100m of copper wire to 2km, it is a product dedicated for FTTH (Fiber to The Home).



D5MFOMC

## TECHNICAL SPECIFICATIONS

Port number	<b>one 10/100Mbps Auto-Negotiation double speed switch port one SC 1310nm (62.5/125μm, 500 MHz*km) multi-mode optical port</b>
Network standards	<b>IEEE802.3 10BASE-T Ethernet, IEEE802.3U 100BASE-TX, IEEE802.3x Flow control, IEEE802.1q VLAN, IEEE802.1p QoS, IEEE802.1d Spanning Tree</b>
Conversion method	<b>media conversion, store-and-forward/cut-through</b>
Network cable	<b>STP/UTP twisted pair</b>
Transmission distance	<b>2Km</b>
Transmission bandwidth	<b>100BASE-TX: 200Mbps/full duplex; 100Mbps/half duplex</b>
100BASE-T	<b>20Mbps/full duplex ; 10Mbps/half duplex</b>
Operating voltage	<b>DC5V 1A</b>
Working temperature	<b>0°C - 40°C</b>
Working humidity	<b>10 – 90% RH</b>

## PRODUCT FEATURES

- IEEE802.3, IEEE802.3u Ethernet protocol standards compatible
- Efficient built-in switching core realizes flow control and reduces broadcast
- Supports 1600byte super data packet transmission
- Supports Qos and guarantees VOIP data packet transmission
- Supports VLAN super data packet transmission
- Supports low delay transmission
- 10M/100Mz full duplex, half duplex auto-negotiation enabled
- Supports non-blocking, non-head-of-line-blocking and full wire-speed forwarding
- Dynamic memory allocation, efficient buffering, balanced network load and preventing from data-packet dropout
- All twisted pair ports support automatic polarity conversion and the system is convenient for debugging and installation
- Dynamic LED indicators provide indication for working state and troubleshooting

CATALOGUE NUMBER	DESCRIPTION	SIZE
D5MFOMC	Fiber Media Converter Module	120mm x 46mm x 47mm



# Others

The Blank Plate Module is applicable for the vacancy in LexCom Home range module mounting bracket, to act as a baffle. Brand LOGO on the module panel not only establishes brand image that people associate the company, but also helps to hold up the module mounting bracket.

**TECHNICAL SPECIFICATIONS**

Operating temperature	-20 - 90°C
Operating humidity	≤ 90% RH



D5MBN1U



D5MBN5U

CATALOGUE NUMBER	DESCRIPTION	SIZE
D5MBN1U	1U Blank Plate Module	120mm x 46mm x 10mm
D5MBN5U	5U Blank Plate Module	120mm x 233mm x 10mm

# Others

The module provides the keystone mounting frame for install RJ45 modular jacks, its function likes a data patch panel for connect the income circuit and then distribute to other ports connecting to rooms. Through the RJ45 patching, it allows data circuit connection to different location effectively.

**TECHNICAL SPECIFICATIONS**

Working temperature	-20 - 90°C
Working humidity	≤80% RH



D5MDP08

CATALOGUE NUMBER	DESCRIPTION	SIZE
D5MDP08	8 Outlets RJ45 Termination Module	120mm x 46mm x 47mm

## About Schneider Electric

As a global specialist in energy management with operations in more than 100 countries, Schneider Electric offers integrated solutions across multiple market segments, including leadership positions in Utilities & Infrastructure, Industries & Machines Manufacturers, Non-residential Building, Data Centres & Networks and in Residential. Focused on making energy safe, reliable, efficient, productive and green, the Group's 140,000 plus employees achieved sales of 24 billion euros in 2012, through an active commitment to help individuals and organizations make the most of their energy.

[www.schneider-electric.com](http://www.schneider-electric.com)

